

Penguin Rescue

Annual Report 2014/15



Hiltrun Ratz, Rosalie Goldsworthy and Chris Lalas



Penguin Rescue

www.penguins.org.nz

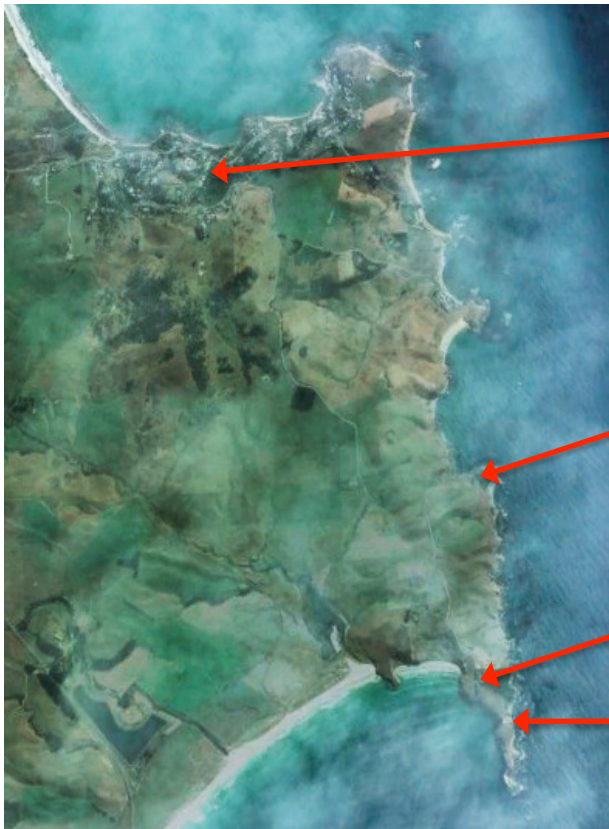
aka Katiki Point Penguin Refuge Charitable Trust

Our vision: remove Yellow-eyed penguins off the endangered species list

Our mission: providing sanctuary for penguins

Our work: optimise penguin habitat
maximise breeding success and survival
minimise human disturbance

- based at Katiki Point Lighthouse
- two Yellow-eyed penguin colonies:
 - Katiki Point
 - Okahau Point
- started 30 years ago by Janice and Bob Jones



Moeraki

Okahau Point

Katiki Point Lighthouse

Katiki Point

2014/15 season

Katiki Point: 34 nests

Okahau Point: 24 nests

How did that stack up with the past and elsewhere:

Katiki Point:	2013/14	31 nests
	2014/15	34 nests

10% increase

Okahau Point:	2013/14	27 nests
	2014/15	24 nests

11% decrease

North Otago:	2013/14	70 nests
	2014/15	64 nests
9% decrease		

Otago Peninsula:	2013/14	128 nests
	2014/15	92 nests
28% decrease		

Catlins:	2013/14	159 nests
	2014/15	91 nests
43% decrease		

North Otago close-up

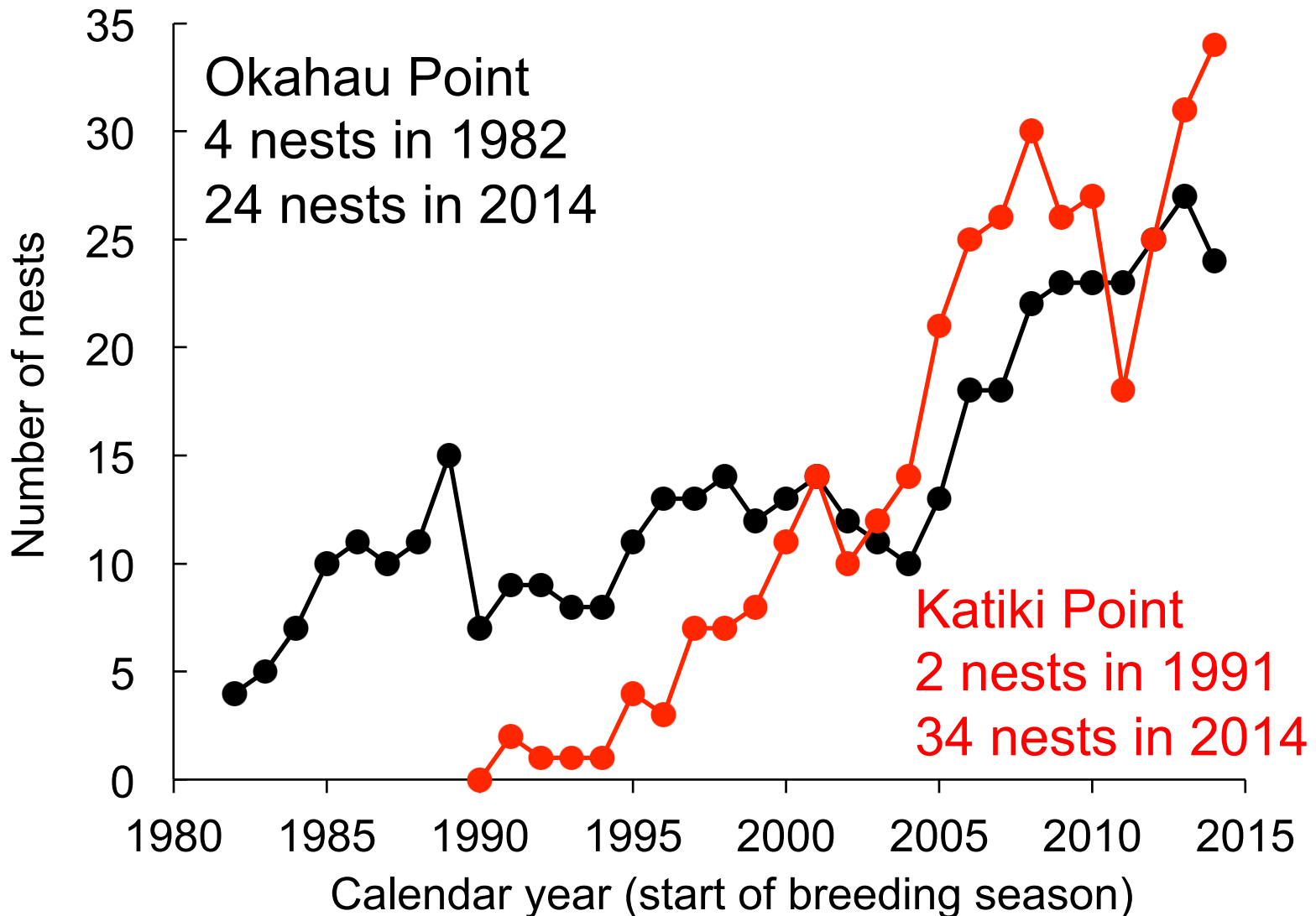
Moeraki Peninsula: 58 nests

elsewhere (4 locations): 6 nests

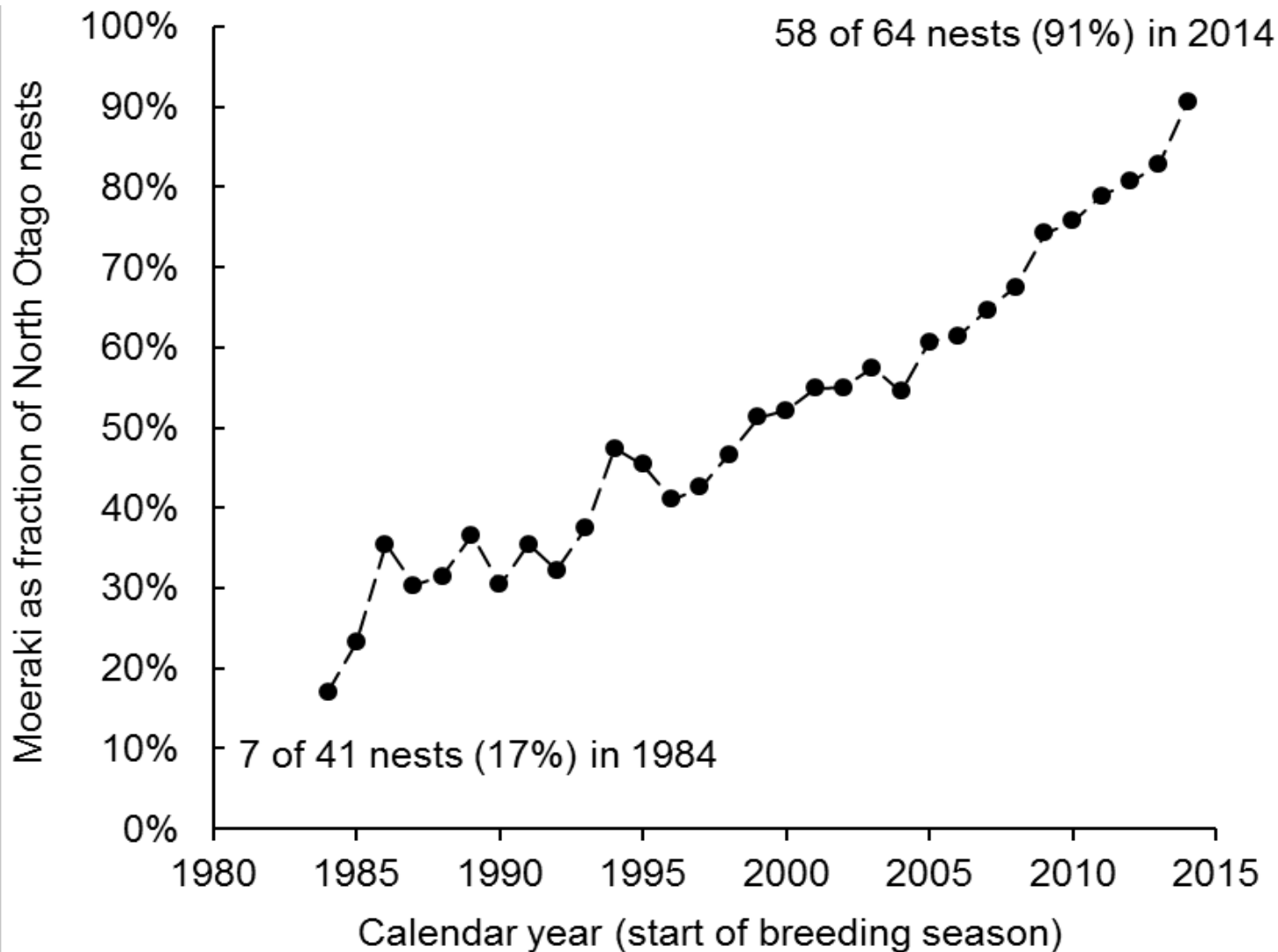
Moeraki: 91% of nests in North Otago

about 23% of nests on South Island (58/247 nests)

Yellow-eyed penguin nests at Katiki Point and Okahau Point from 1982 to 2014



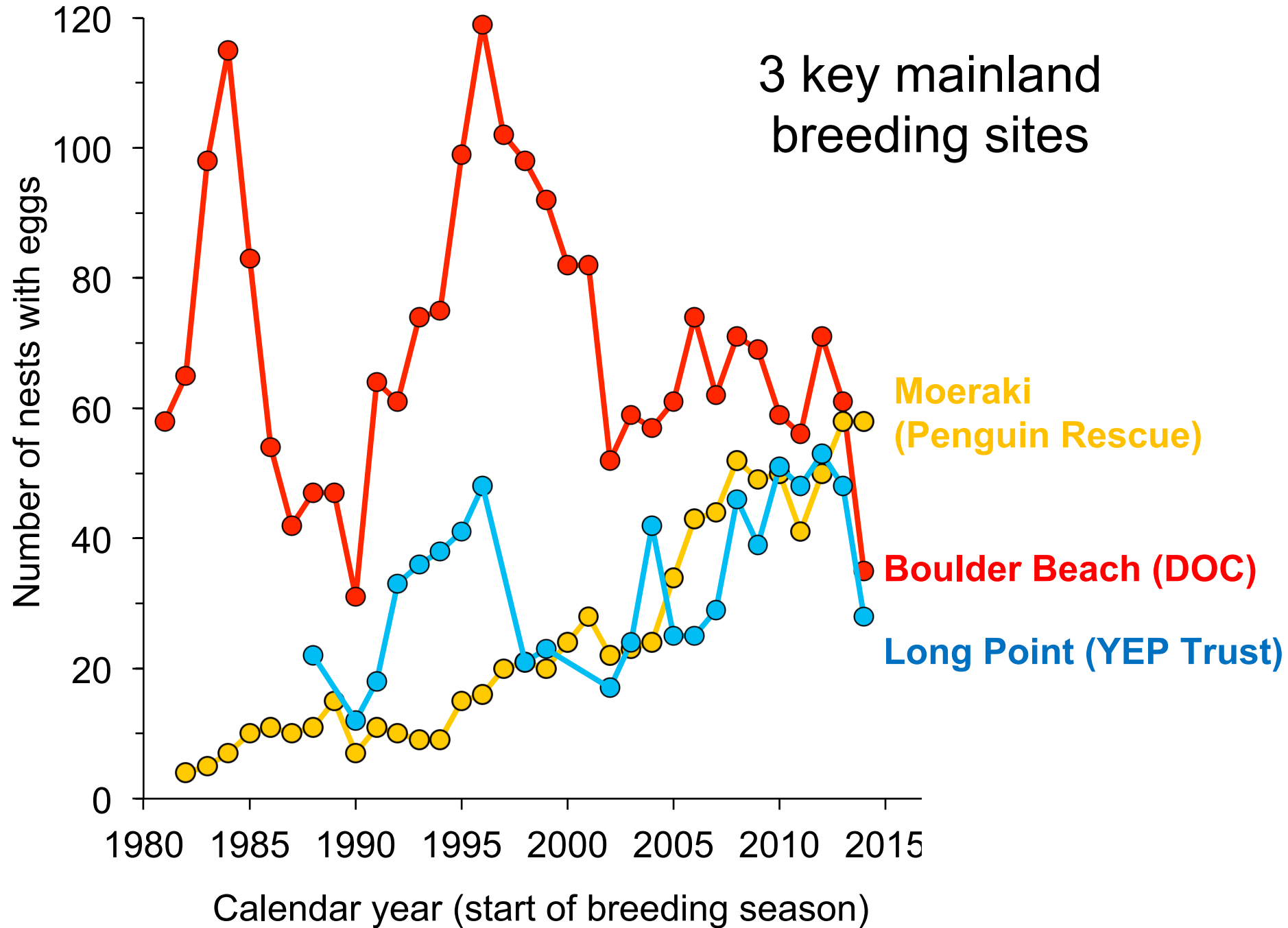
Yellow-eyed penguin nests at Moeraki as a proportion of all North Otago nests from 1984 to 2014



Letter from the Minister of Conservation,
the Honourable Maggie Barry
(4 April 2015)

*Katiki Point (including Barracouta Bay/
Okahau Point) does represent one of the key
mainland breeding sites for yellow-eyed
penguin.*

*The other key sites are Boulder Beach on the
Otago Peninsula (primarily managed by
departmental staff) and Long Point in the
Catlins (primarily managed by the Yellow-
eyed Penguin Trust).*



Effect of 2013/14 rehabilitation effort on 2014/15 breeding pair numbers

Katiki Point: 34 females bred

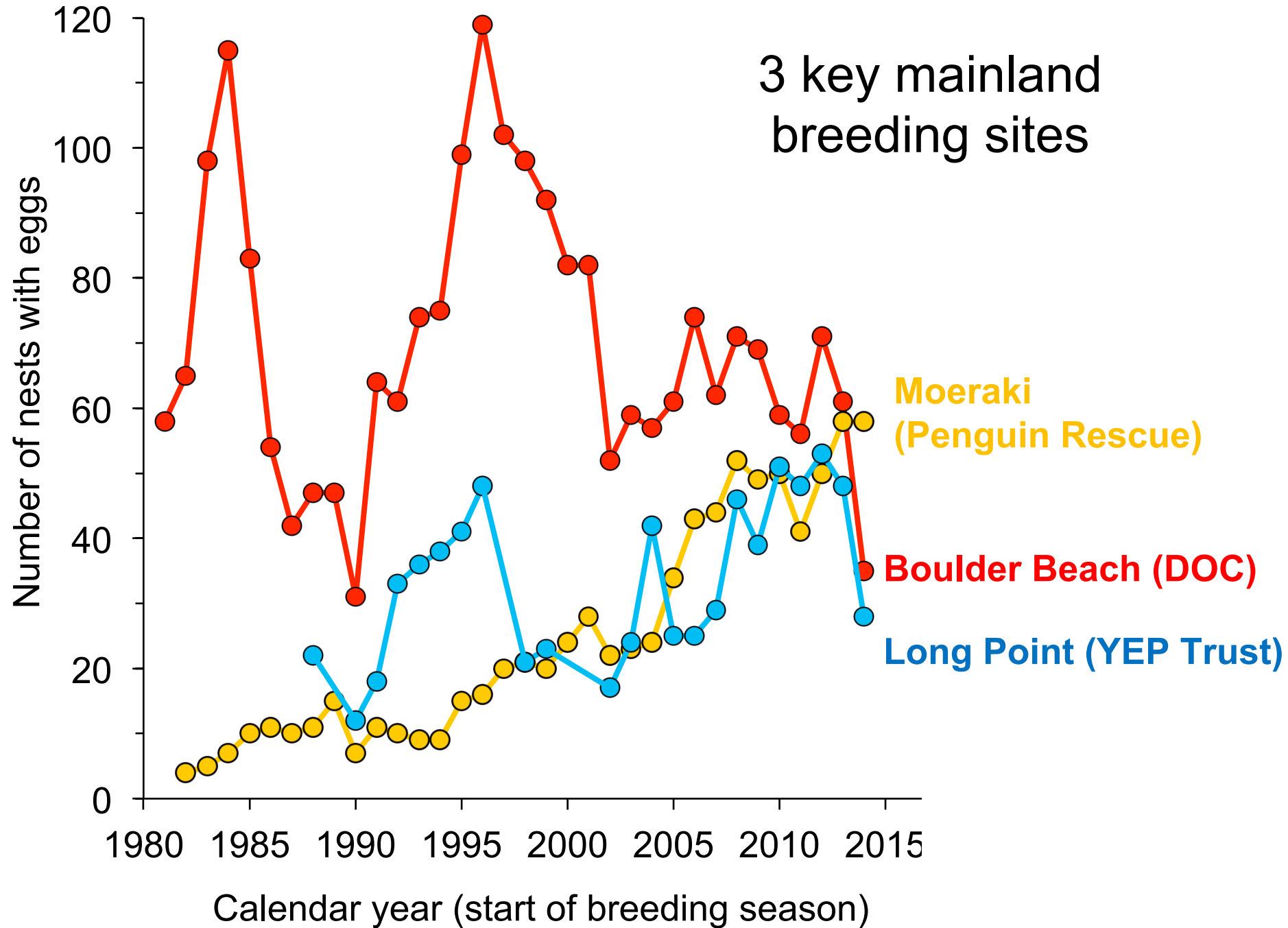
5 had been rehabilitated and released

6% decrease instead of a 10% increase

Okahau Point: 24 females bred

2 had been rehabilitated and released

19% decrease instead of a 11% decrease



If you do rehabilitation right, nest numbers fluctuate less erratically and can increase even as decreases occur elsewhere.

Rehabilitation in 2014/15

Yellow-eyed penguins:

	admissions	individuals	release rate of individuals
adults	40	34	82%
juveniles	9	7	86%
pre-fledging chicks	24	24	88%
post-fledging chicks	14	5	60%
TOTAL	87	70	83%

Breeding success in 2014/15

Katiki Point

Okahau Point

Number of nests	34	24
Number of eggs laid	65	46
Number of eggs hatched	53	40

Fertility

eggs hatched / laid

82%

87%

Breeding success in 2014/15

	Katiki Point	Okahau Point
Number of chicks fledged	24	32
Number of chicks fledged naturally	14	21
Chick survival chicks fledged/ hatched	45%	80%
Chicks raised per pair chicks fledged/ nest	0.71	1.39

WHAT HAPPENED????

What did not happen:

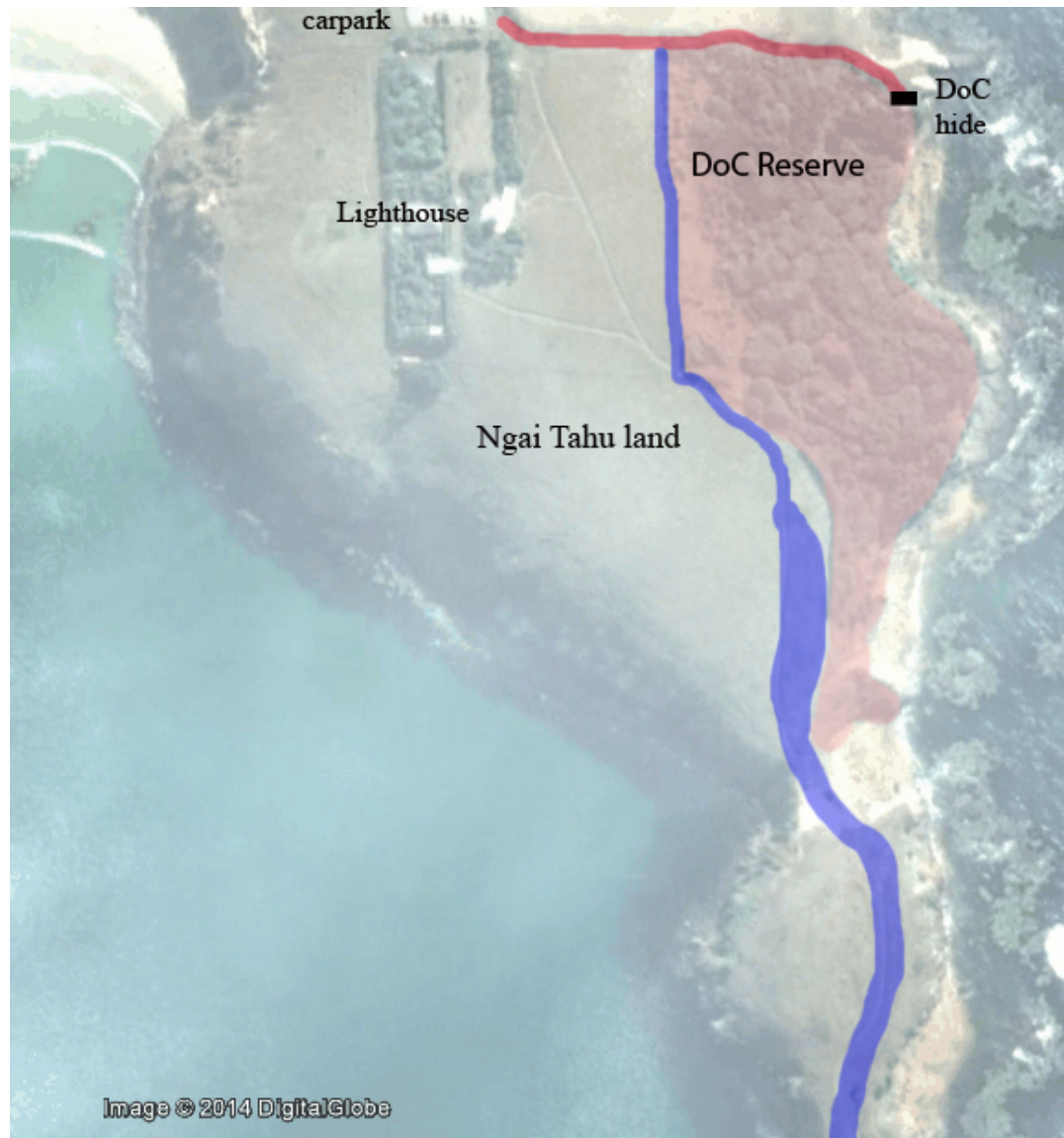
- Predation
 - Katiki Point: 26 cats and 3 ferrets
 - Okahau Point: 5 cats and 2 ferrets

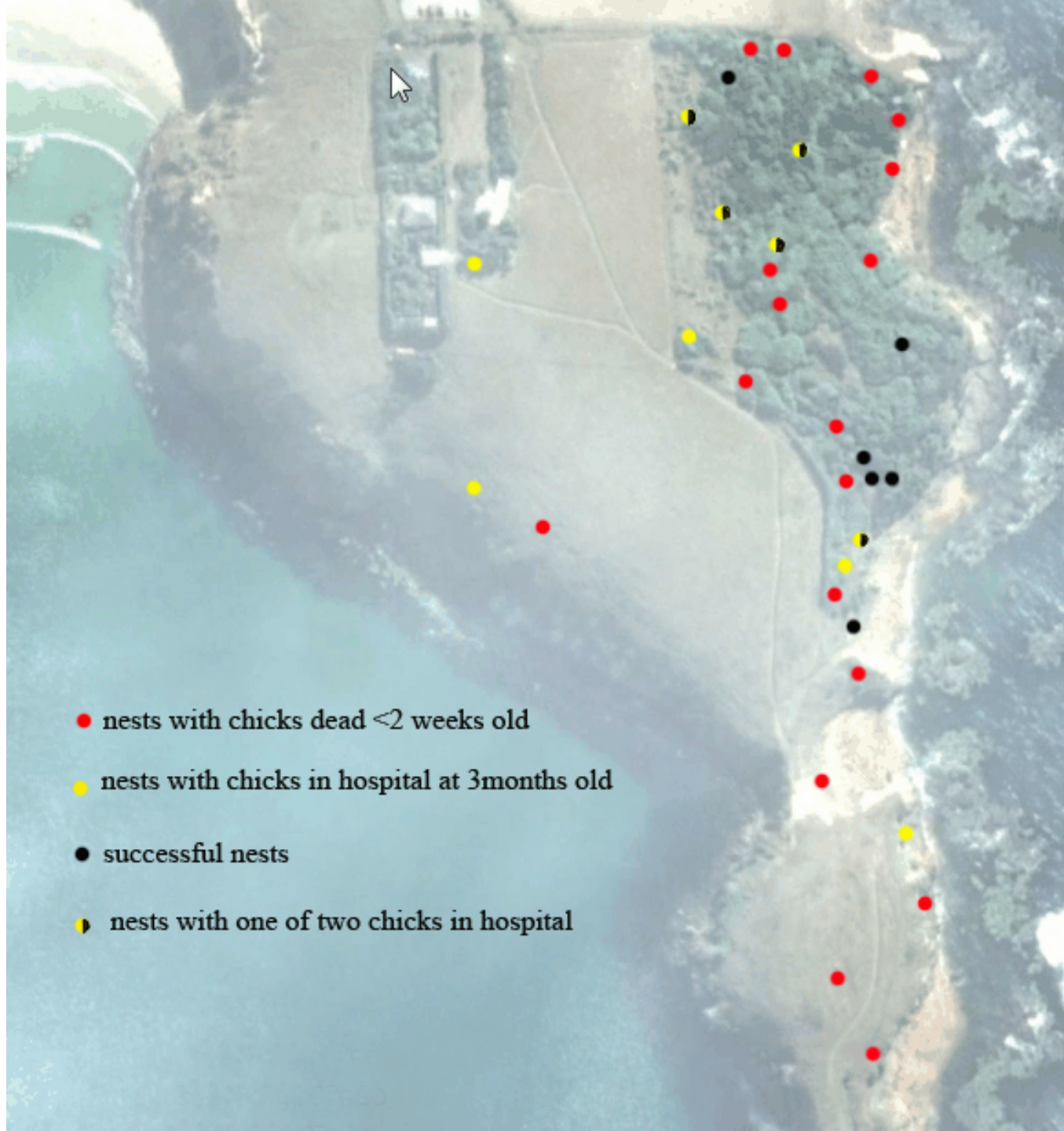
no Yellow-eyed penguin chicks
were killed

What did happen:

- est. 40 000 – 50 000 visitors in the 2014/15 season
- min. 28 000 visitors in 5 months (November to March)
 - Over 1000 visitors on 1 January alone

Visitors at Katiki Point





- nests with chicks dead <2 weeks old
- nests with chicks in hospital at 3 months old
- successful nests
- nests with one of two chicks in hospital

Consequences

	Nests < 10m or track crossing	Nests \geq 10m
Number of nests	20	16
Number of eggs laid	35	30
Number of eggs hatched	25	28
Fertility eggs hatched / laid	71%	93%

**Nests < 10m
or track crossing**

Nests \geq 10m

Number of chicks dead
< 2 weeks old

16 64%

12 43%

Number of chicks fledged
through hospital

6 24%

4 14%

Number of chicks fledged
naturally

2 8%

12 43%

chicks fledged pair pair

0.40

1.00

There is no free lunch

The price for penguins is NOT just

- elevated stress hormones
- elevated heart rate

The price is DEAD penguin chicks

Who is responsible for the penguins?

Katiki Point has two owners:

Wildlife Management Reserve – DoC is responsible

Private landowners: Ngai Tahu – *kaitiakitanga* - guardians

DoC:

Community Groups Liason strategy:

North Otago officer has introduced himself 16 months after starting the new job, nothing for 9 months

Dunedin officer has visited us once – 17 months ago

One letter from Dunedin officer: stop asking people to leave, 24/7 access has to be allowed

Our letter to DoC asking about Nature Reserve status has so far stayed un-answered for 5 months – and counting

Fire risk raised in early January 2015:



extreme risk –
fire officer of the
Otago Rural Fire
Service

Response from DoC:

Polite e-mail advising us to be careful when using power tools

It took 18 months and political pressure to get re-issued a rehabilitation permit – with 75 clauses of terms and conditions

Hide: suspicions that people climb out and harrass penguins
don't do anything – DoC will look into it
nothing 8 months later

Ngai Tahu

Declared Katiki Point: Jewel in their crown

Yellow-eyed penguins are a *taonga* species

Several invites to local runanga to meet with us:
no response

Requests to talk at their regular meetings: no time

Fire risk: no response

Stock-take meeting invitation: no response and no show

Person responsible for their special places:
some e-mail correspondence

visited Katiki Point but no meeting with us – no time

Meetings between DoC and Ngai Tahu to discuss
Katiki Point:
no consultation with us

Eco-tourism venture: we offered to help start up
answer: no, we want to do this
nothing in 12 months

Invitation to view *titi* (Sooty shearwaters)
no interest

No communication and no interest

What is the interest?

Guess: free sheep grazing



A big fence was built:

in September at egg laying time



No one asked what effect this could have on penguins

Instead of the diagonal path everyone walks along the reserve edge and within a few meters of penguin nests.

People are noisy:
Laughing, talking, shrieking children, crying babies

DoC had the barbwire removed for health and safety reasons:
now easier to climb the fence





Our message:

DoC and Ngai Tahu: you are legally responsible

Yellow-eyed penguins are not expendable

Yellow-eyed penguins are not items to be ticked off on a list of things to do in NZ

No Yellow-eyed penguin colony is a sacrificial lamb

Yellow-eyed penguins have the right to live undisturbed anywhere

What we ask:

Stop ignoring us, the issues at Moeraki and uncontrolled tourists

Stop making our lives harder: our ONLY interest is the protection of the penguins

Start asking how you can help us and support our efforts
instead of telling us all the things we are not allowed to do

**Step up to your responsibilities
and help us to protect these penguins**